

Setup Instructions

Use S-Video Connection

With Extended Desktop

to display objectives Power Point
on your Television

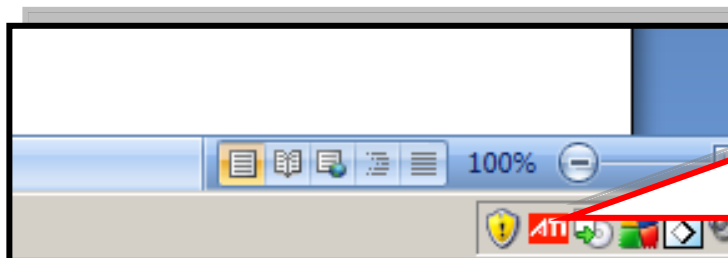


Extending the Desktop to your Television

Show your objectives PowerPoint on your TV

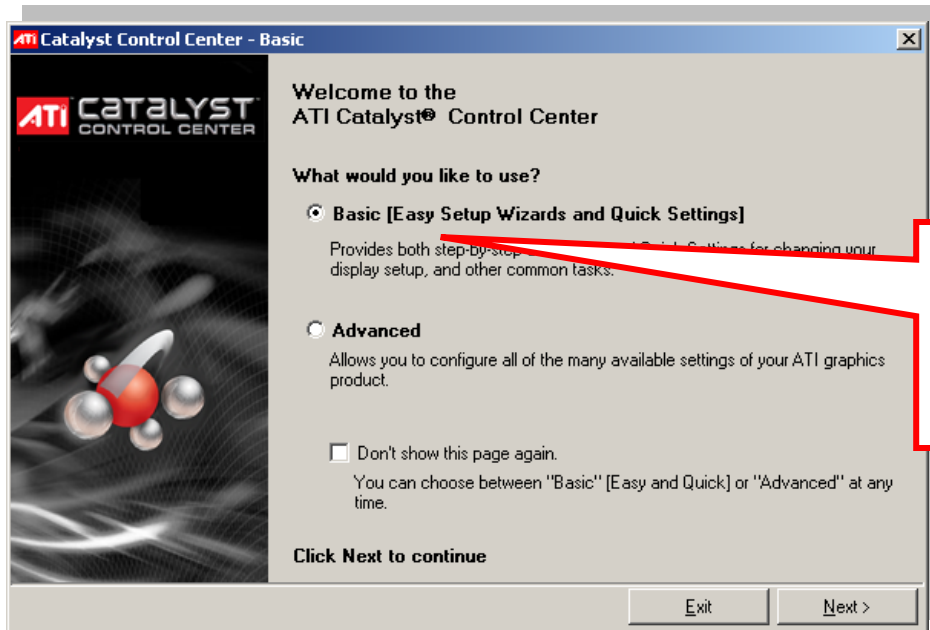
Step 1: Setup S-Video

Important: First plug your S-Video cable into the back of your computer and the back of the television and restart your machine **before** proceeding so the software will recognize that they are connected before you begin.



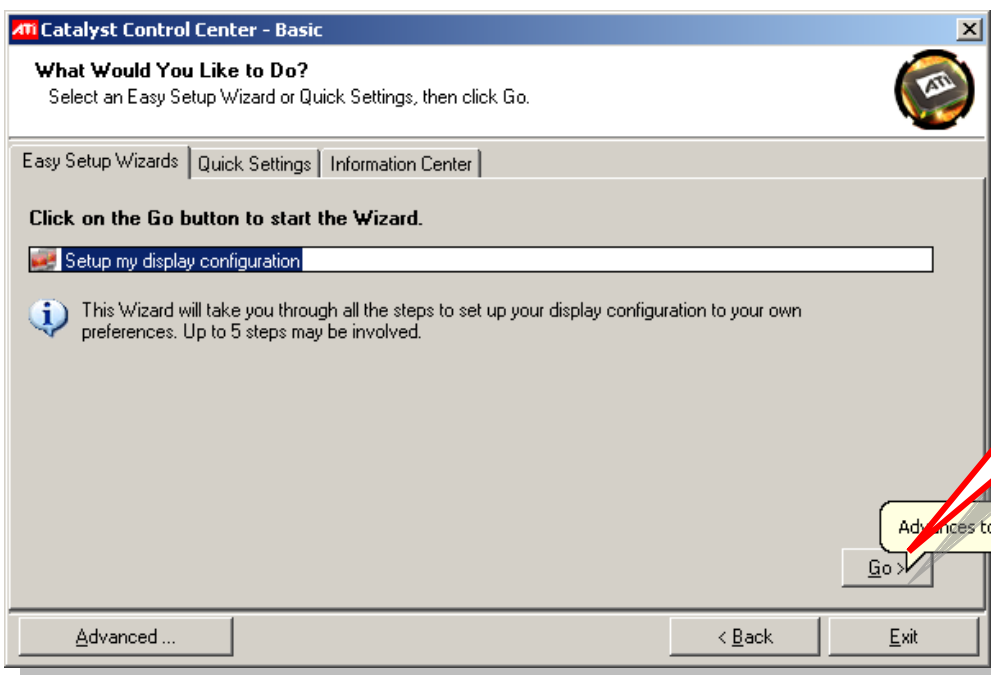
1. Click on the **ATI icon** in the bottom right taskbar of your screen.

No icon- enter a work order for software



2. **Basic** should be selected.

Click **Next**.



3. Click **Go**

ATI Catalyst Control Center - Basic

Available Display Devices

You can show your computer desktop on one or more displays at the same time.

The following display devices are connected to your ATI graphics product.

Which would you like to use?



Choose Main Display:

☒ Analog Monitor
(DELL E178FP)



☐ Standard TV
(S Video)



Choose Second Display:

☐ Analog Monitor
(DELL E178FP)



☒ Standard TV
(S Video)

☐ None

< Back

Next >

4. Click in the circle next to **Standard TV. (S-Video)**

Click **Next**.

Note: If you don't see this screen, then make sure the S-video is plugged into the back of your computer and TV and that you restarted your machine because it doesn't recognize that they are connected yet.

****If you still don't this window then enter a work order.**

ATI Catalyst Control Center - Basic

Desktop Mode Selection

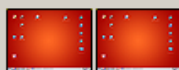
The desktop mode selection will determine how the computer desktop is shown on your displays.

Select a desktop mode:



☐ Extended Desktop

The desktop is extended to your second display. Settings can be set indepe for each display. This is useful when you want to watch video, or work on yo computer with more room for multiple windows.



☒ Clone

The same desktop image is shown on both displays. This is useful when givi presentations.



☐ Horizontal Stretch

One large desktop is stretched across two displays as if they were a single display. Settings are the same for both displays.

Start Over

< Back

Next >

5. Click in the circle next to **Clone**.

Click **Next**.

ATI Displays Manager Notification



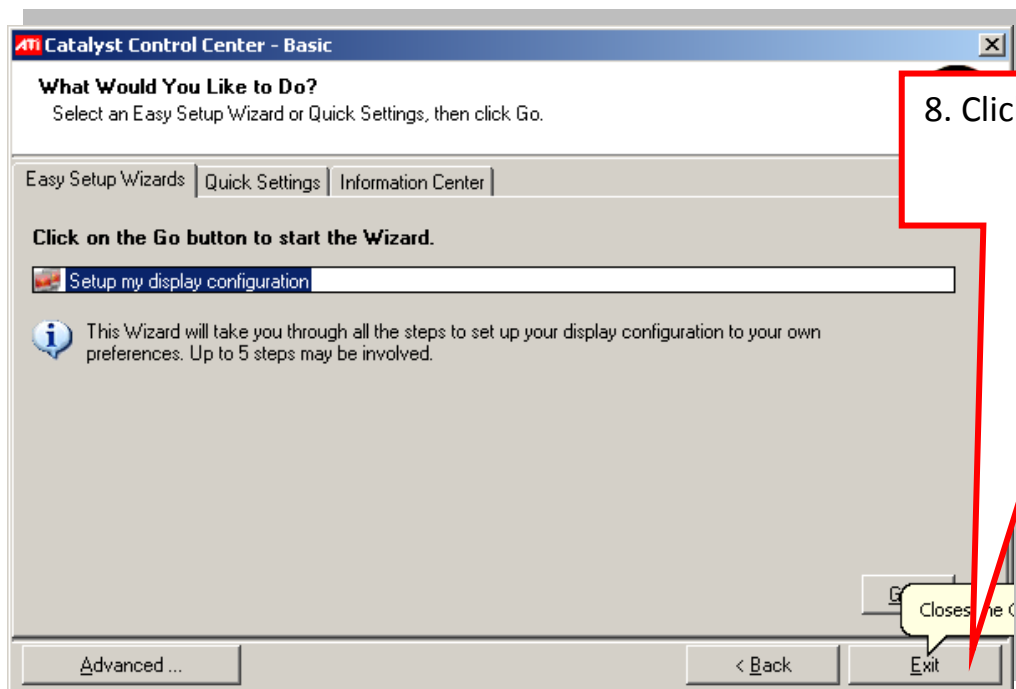
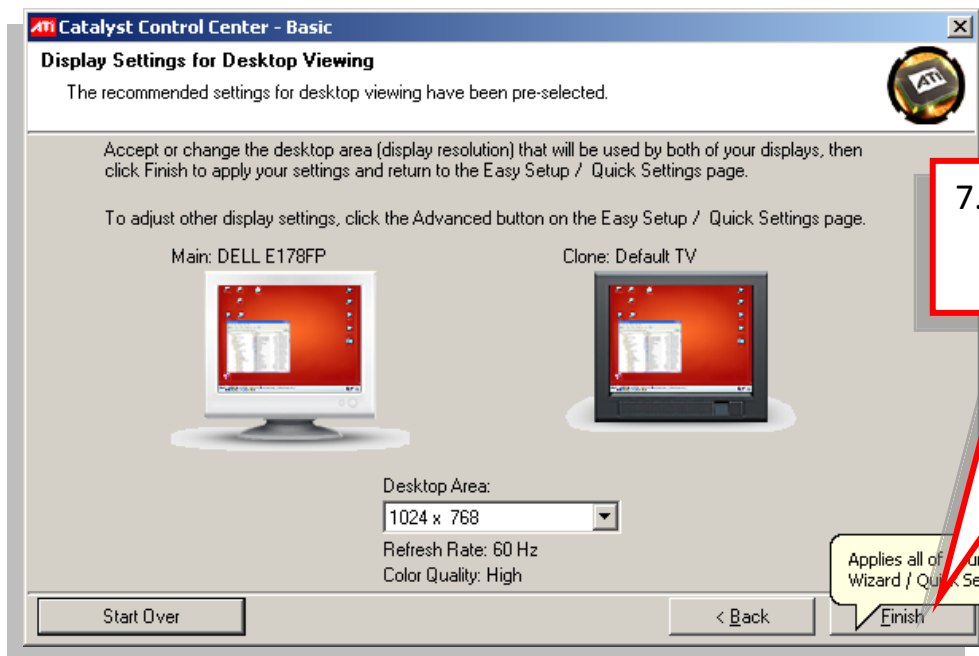
Your Display settings have been changed.
Do you want to keep the new settings?

Reverting in 13 seconds

Yes

No

6. Click **Yes** before it reverts back to old settings.

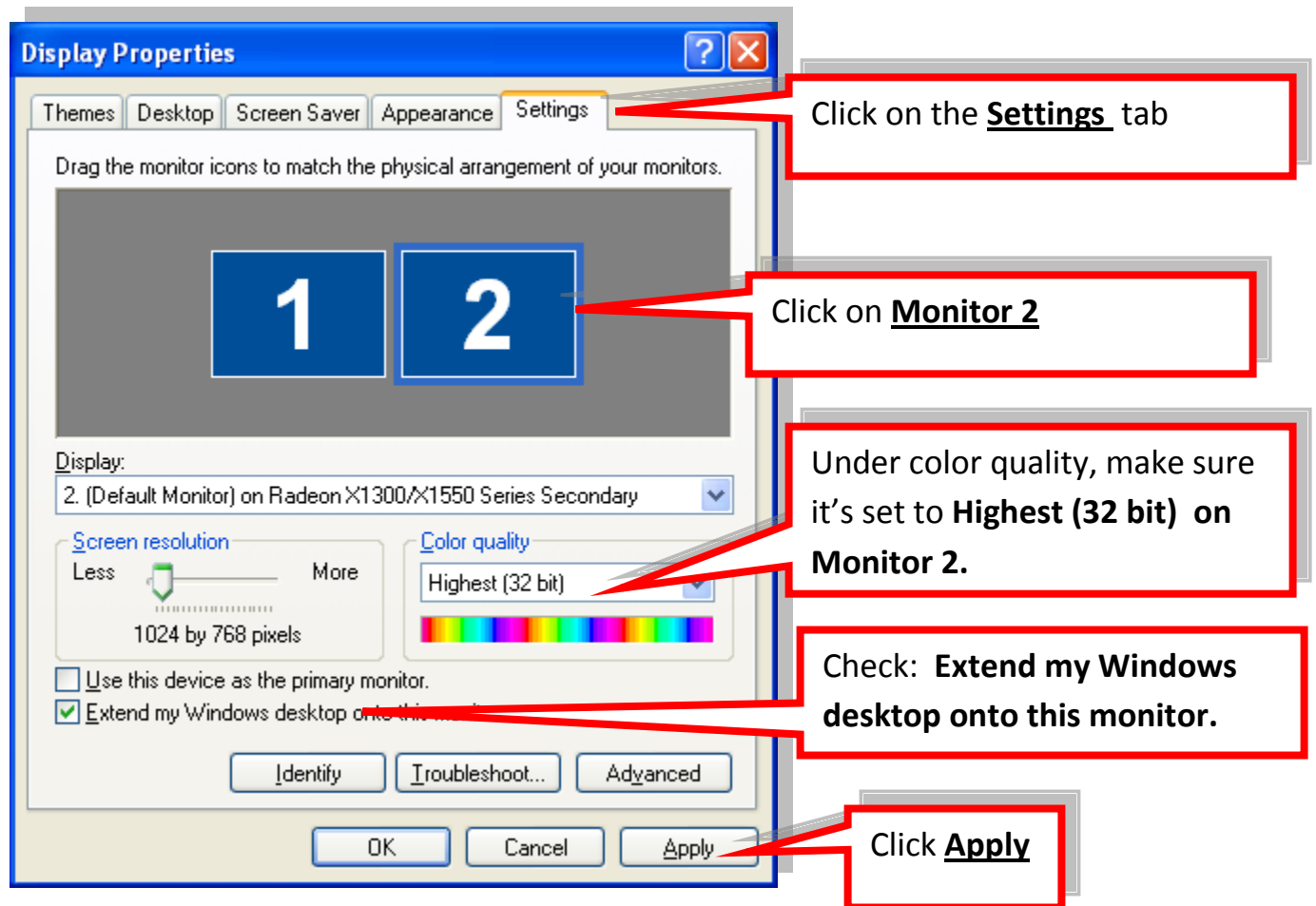


Note: If your S-Video is still not working and the S-video is plugged into your TV and the back of your computer and you have restarted your machine, go ahead and enter a work order.

Step 2: Set computer up to **extend the desktop** to your television.

This will allow you to show your objectives PowerPoint on your television (*with your S-Video cable*) while you work on something else on your computer.

First, right click on the desktop and choose **Properties**

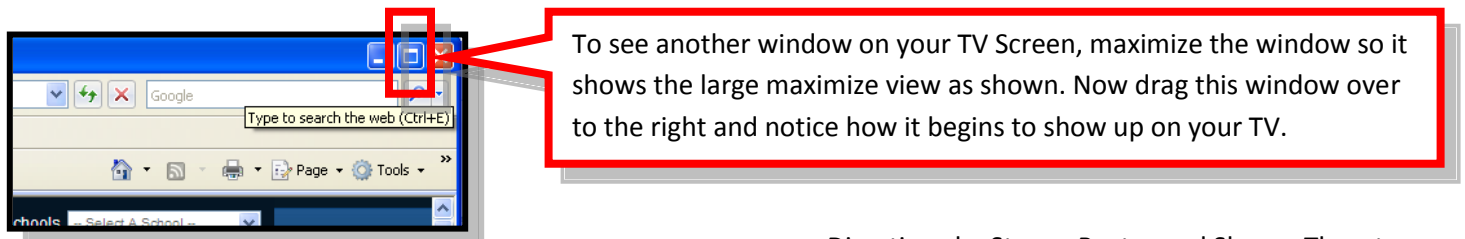


Now turn your TV on and set it to S-Video. The screen will be a solid blue.

You are seeing the other side of your monitor screen on your TV. Test it:

Take your mouse and drag to the right off of your screen and you will see the mouse on your TV. Now keep dragging until you can see all of it on your television.

*Now you can work on something on your computer while showing your something else on the television. It's a pretty cool feature.

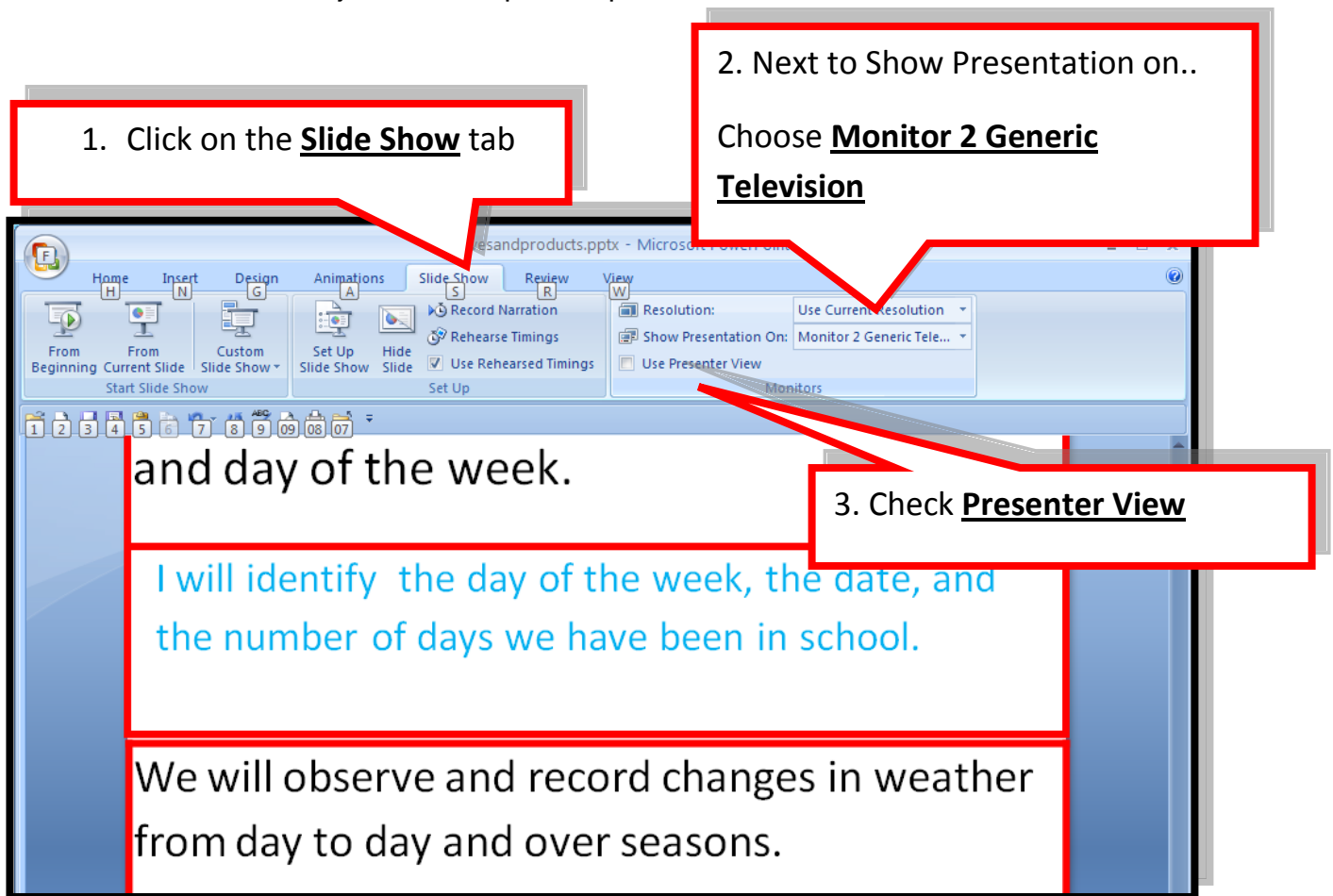


For those who want to run their objectives on the TV through PowerPoint.

- You could also just drag the tool bar on your Objectives Power Point to the TV, but it won't show in full screen. If you want to show your Objectives Power Point in full screen mode you must also change the settings in Power Point. Go to Step 2.

Step 3: Change the settings in PowerPoint- so that when you run the slide show (**by pressing the F5 key on your keyboard**) it shows up on your television in full screen mode.

Note: If you set it up this way- you don't even have to drag the Power Point window over to the television screen- it just shows up in full presentation mode.



Now when you **press the F5 key**, the full slide show will come up on your television using extended desktop.

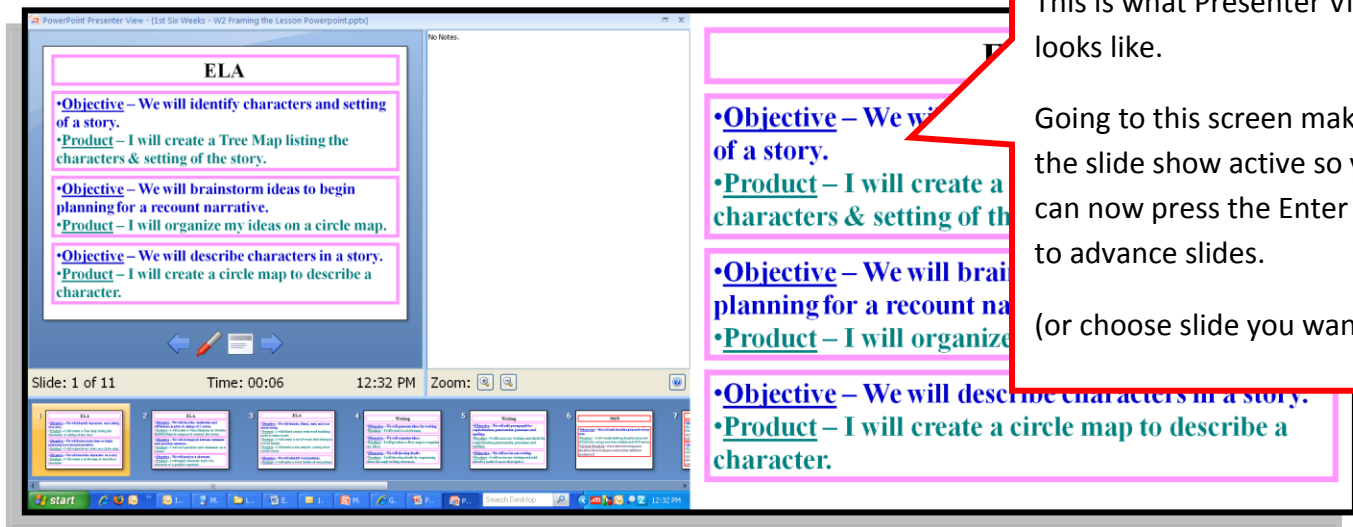
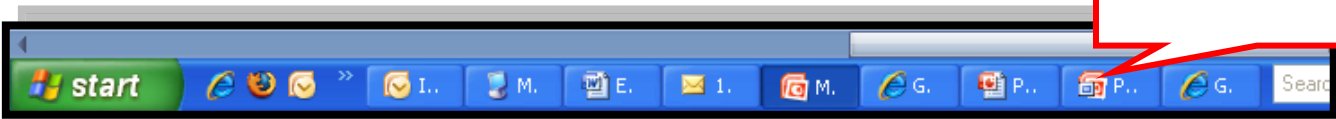
You will still be able to work on something else on your computer showing that through your projector while the slide show runs.

Important Note:

Since an Inactive screen cannot advance the slide show by pressing the enter key-

Click on the **Presenter view** at the bottom and then you can use the arrow or just press the enter key (since the screen will now become active again.)

Presenter View



This is what Presenter View looks like.

Going to this screen makes the slide show active so you can now press the Enter key to advance slides.

(or choose slide you want.)

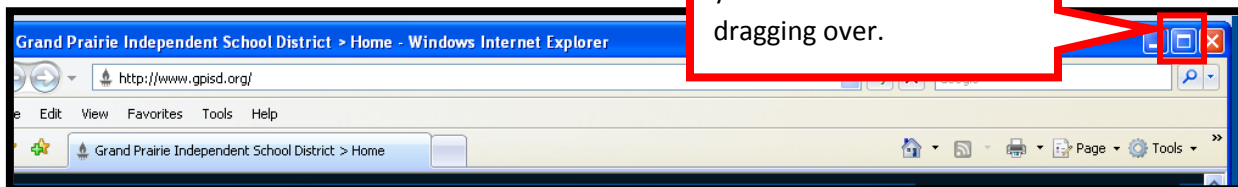
Press the escape key to exit slide show.

Note: Now the TV will turn blue with no icons (or show whatever is on your desktop.) If you take your mouse and drag it over to the right off of your screen you will see your mouse.

• Showing other programs on Extended Desktop

You can also use extended desktop with another program such as the Internet- just maximize the window- then click on the blue bar at the top of the window and drag over to the other screen.

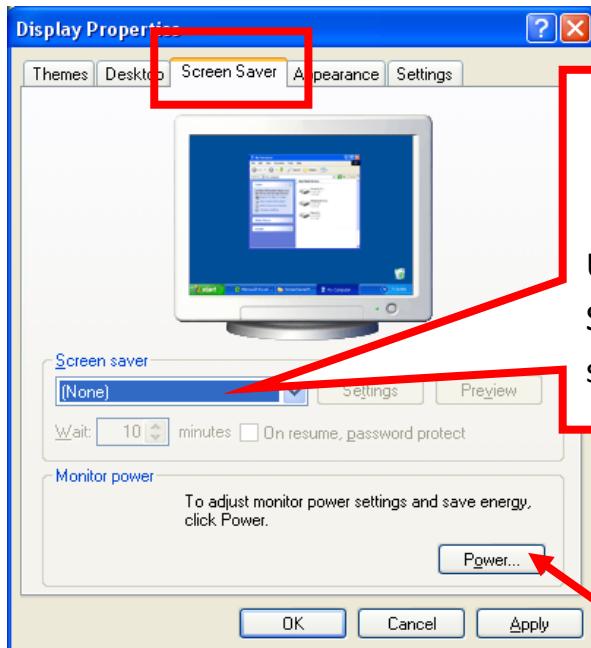
Make sure to maximize your screen before dragging over.



Step 3: Turn off Screen Saver and Set Monitor not to go off

Purpose: If you are displaying your objectives on your television through S-video and you don't want your monitor to go to sleep or enter screen saver mode.

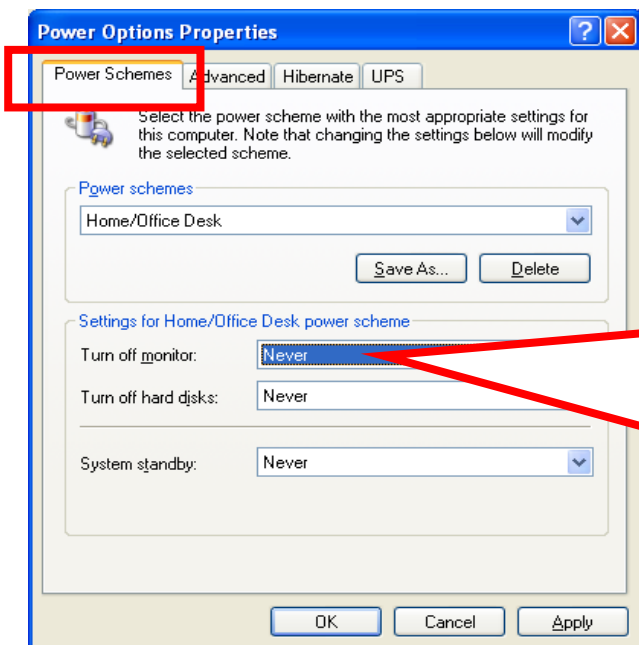
Step 1: Right on the desktop and choose Properties.



2. Click on Screen Saver Tab.

3. Turn off screen saver

Use the drop down arrow next to Screen Saver and choose None as shown to the left.



4. Click on the Power button in the same window above.

5. Click on Power Schemes tab

6. Turn off sleep mode

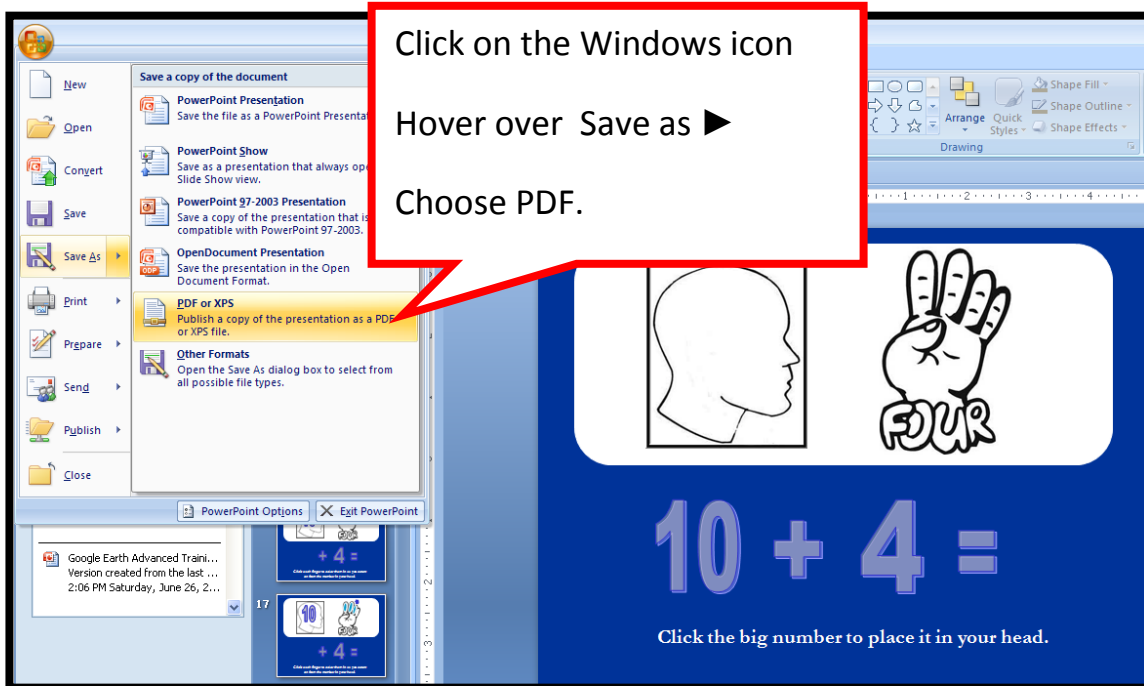
- Use the drop down arrow next to Turn off Monitor and choose Never.

Showing Other Power Points while using Extended Desktop

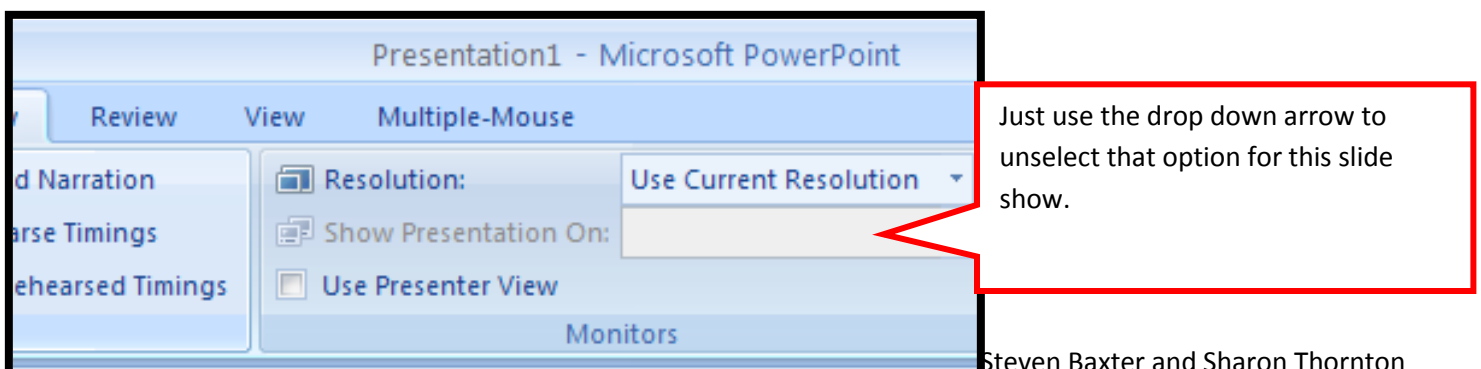
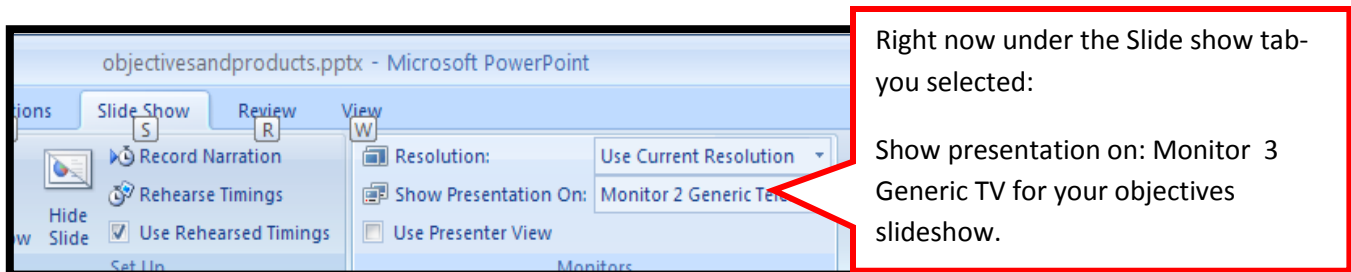
Issue: When you are using Extended Desktop to send your objectives slide show to your TV in presentation mode- any PowerPoint you show full screen will replace your current objectives Power Point on your television.

2 Possible Solutions:

- A. Open the Power Point slide show. Save the Slide Shows as PDF files so you can show your Power Point Slide Shows through your projector while still showing your objectives slide show on your television.



- B. Change the settings on that particular slide show.



One More Trick-

If you have a smart phone (like an iphone) then you can download a free application called the iclicker.

This will allow you to advance your slides and allow you to stay in the “power zone.”

The free version allows you to advanced up to a 15 slide presentation.

The \$10.00 version is unlimited I believe.

Read about it here. <http://www.senstic.com/default.aspx>

Download from from iTunes store.